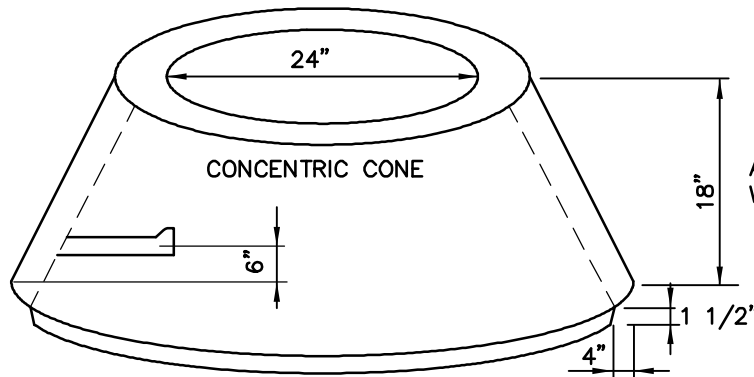


REINFORCED STREET LID  
 - OFFSET HOLE #4210  
 - CENTER HOLE #4211

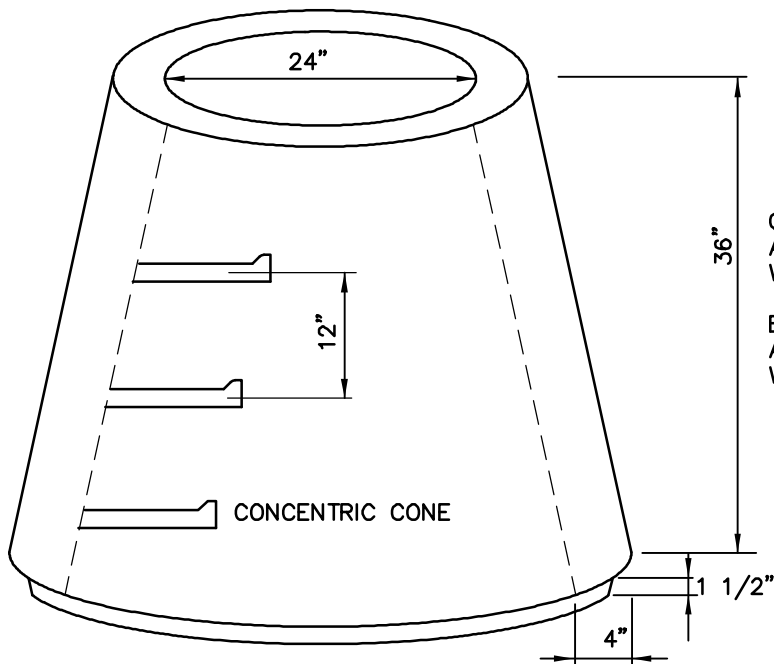
A.S.T.M. - 478 TONGUE  
 AND GROOVE - 4" WALL

ALL WEATHER MASTIC  
 TYPE JOINT



AVAILABLE WITH OR  
 WITHOUT STEPS - #4201

A.S.T.M. - 478 TONGUE  
 AND GROOVE - 4" WALL



CONCENTRIC CONE  
 AVAILABLE WITH OR  
 WITHOUT STEPS # 4207

ECCENTRIC CONE  
 AVAILABLE WITH OR  
 WITHOUT STEPS # 4206

NOT TO SCALE